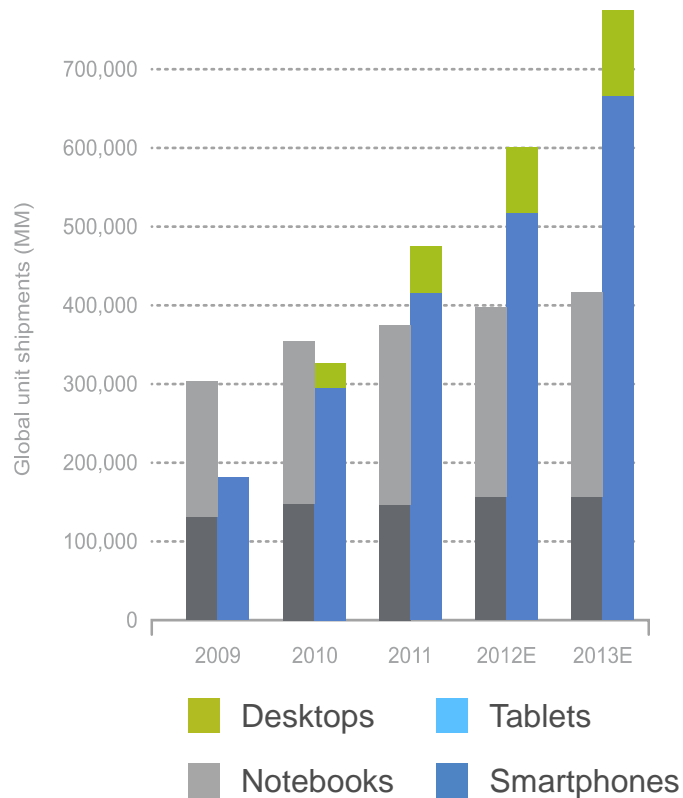




The growth of bandwidth

Claude Sassoulas
Managing Director, Europe & Americas
Tata Communications

Who would have thought...



Who would have thought...

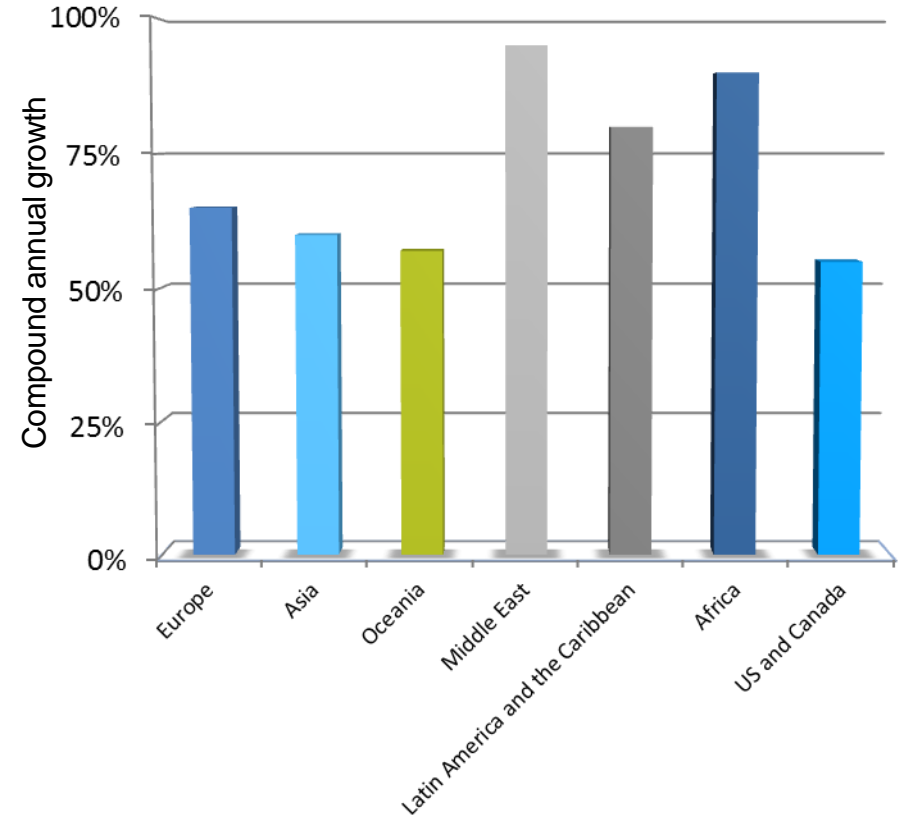
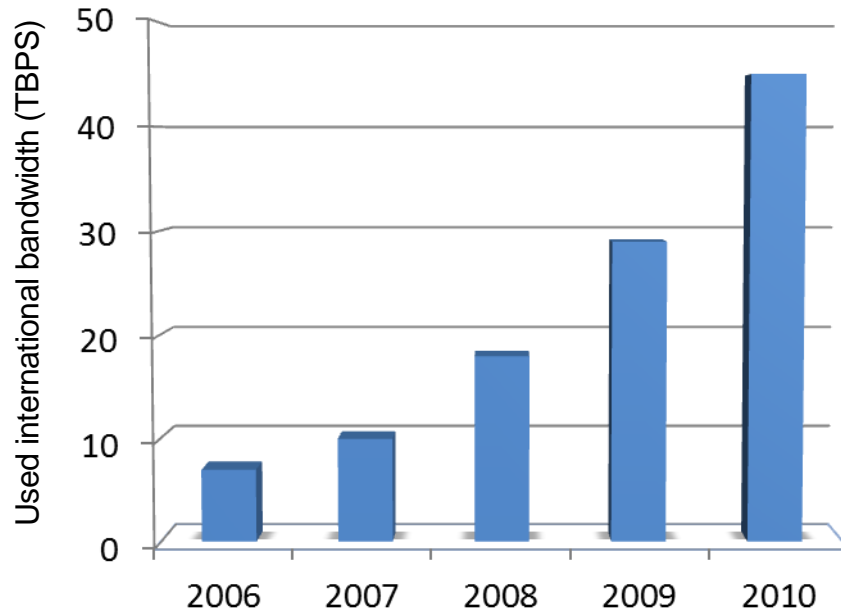
**EVERY SECOND
ONE HOUR OF VIDEO
IS UPLOADED TO
YOUTUBE**



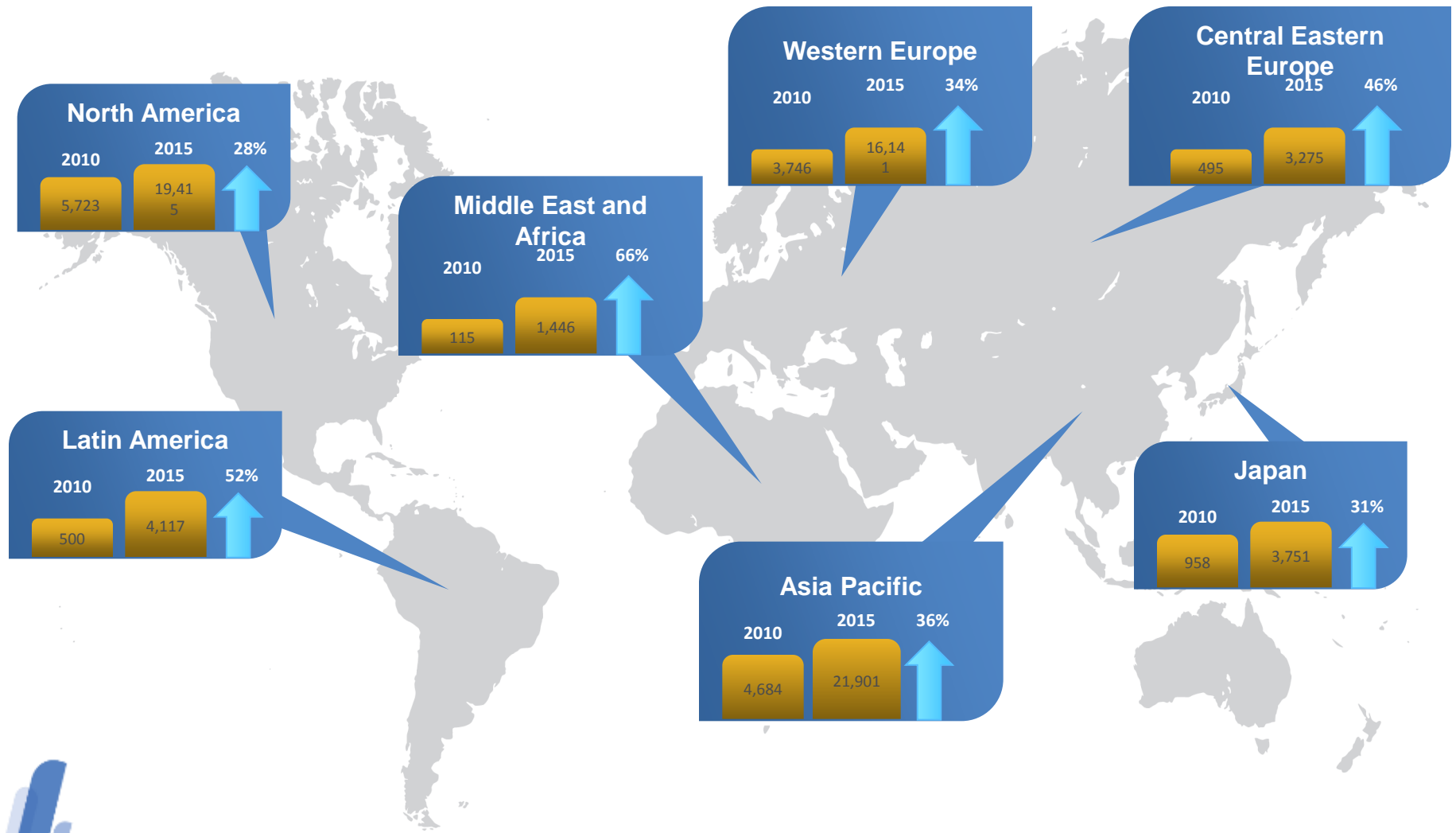
Exponential international bandwidth growth

**Seven-fold growth
in five years**

**Europe growth is +65%
CAGR 2006-2010**



World Internet traffic growth 2010 to 2015

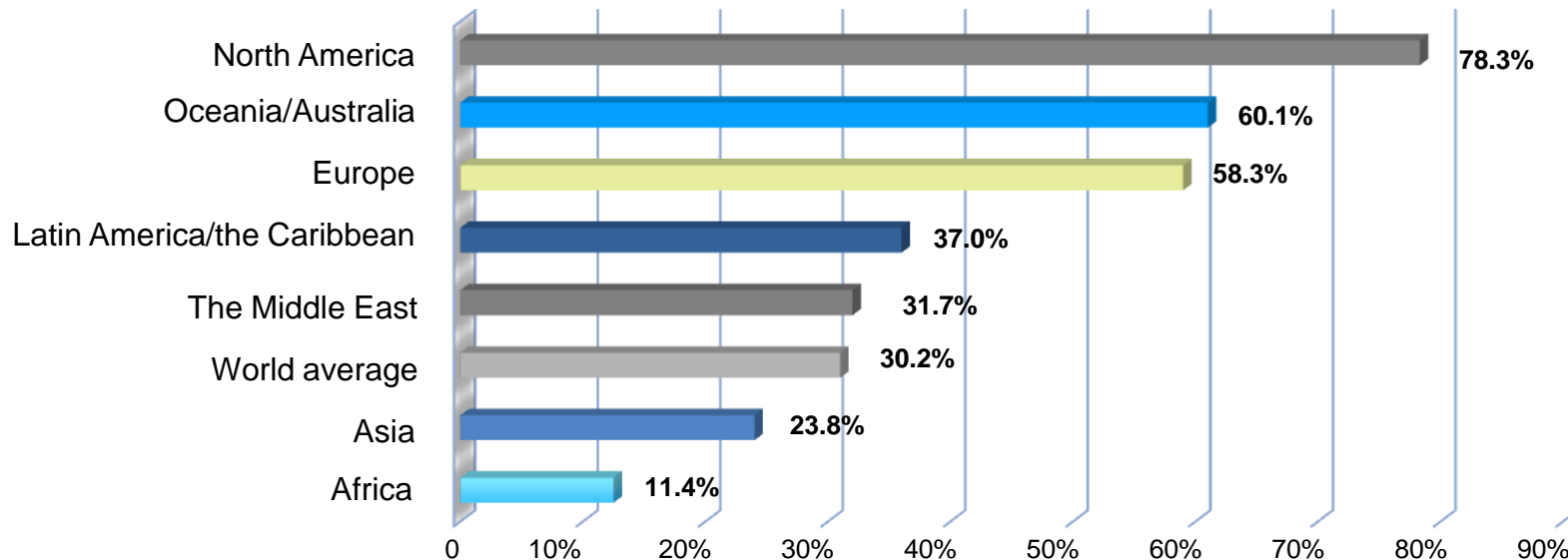


Internet penetration

- Asia has the largest population.
- Internet penetration is low compared to developed countries
- Extensive growth is expected ahead

Internet penetration in Latin America, the Middle East, Asia and Africa is still low.

World Internet penetration rates
by geographic regions - 2011



Source: Internet World Stats – www.internetworldstats.com/stats.htm

Penetration rates are based on a world population of 6,930,055,154 and 2,095,006,005 estimated Internet users on March 31, 2011.

Copyright © 2011, Miniwatts Marketing Group

Traffic growth drivers

IP videos

- Internet video will reach 33,620 PB/month by 2015
- 43% CAGR*

Online TV

- IPTV VoD will reach 2,041 PB/month by 2015
- 23% CAGR*

Mobile

- 3G subscriber growth 35% Y/Y (936M, Q2 '11 17% of all mobile subscribers)**
- 2010-15 global mobile data traffic growth 92%***

Social networks

- 662M users today
- +41% Y/Y



Source:

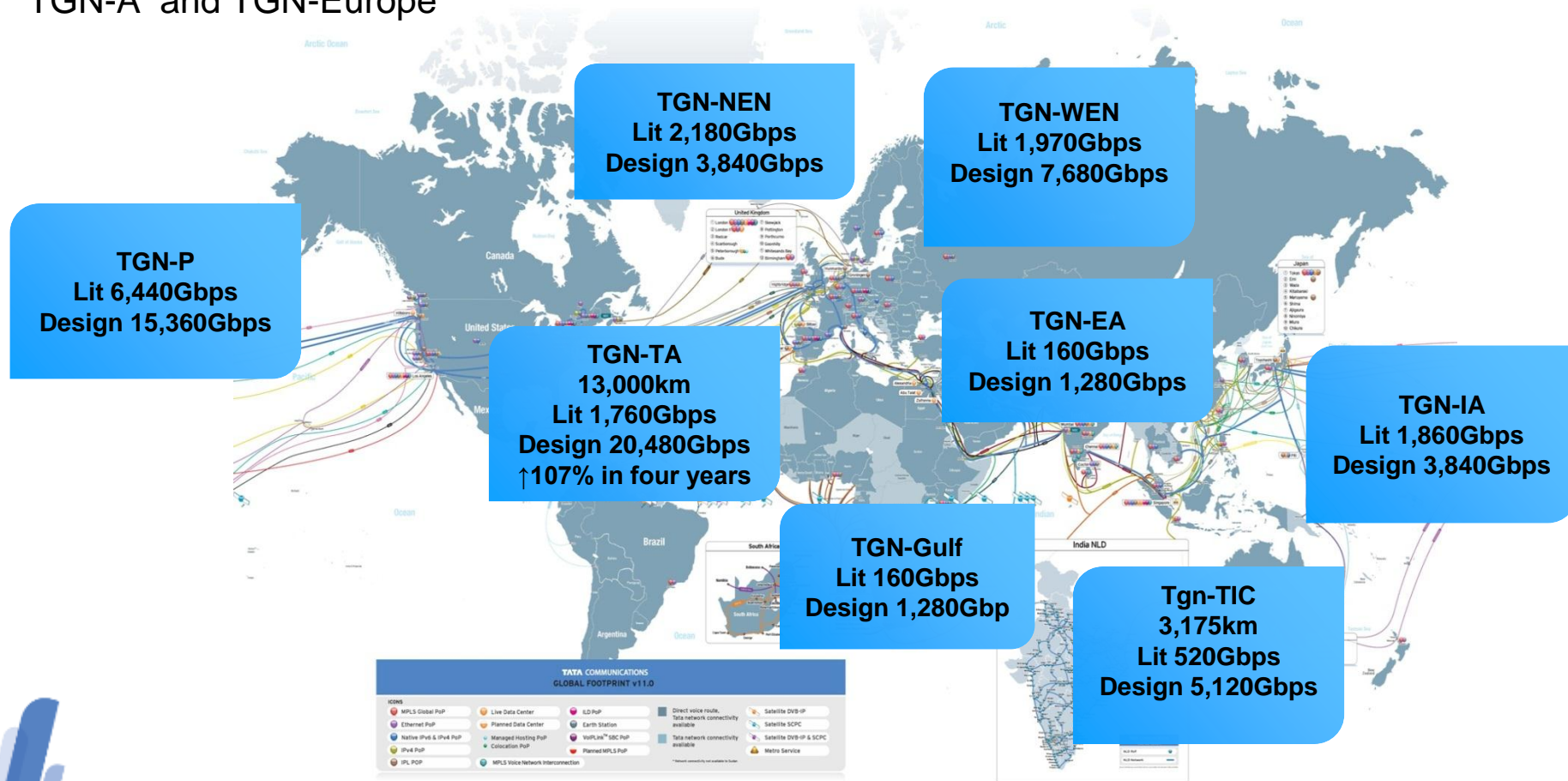
* Cisco VNI. Consumer traffic growth at 32% CAGR (2011-15)

** Informa WCIS+, KPCB Internet trend 2011

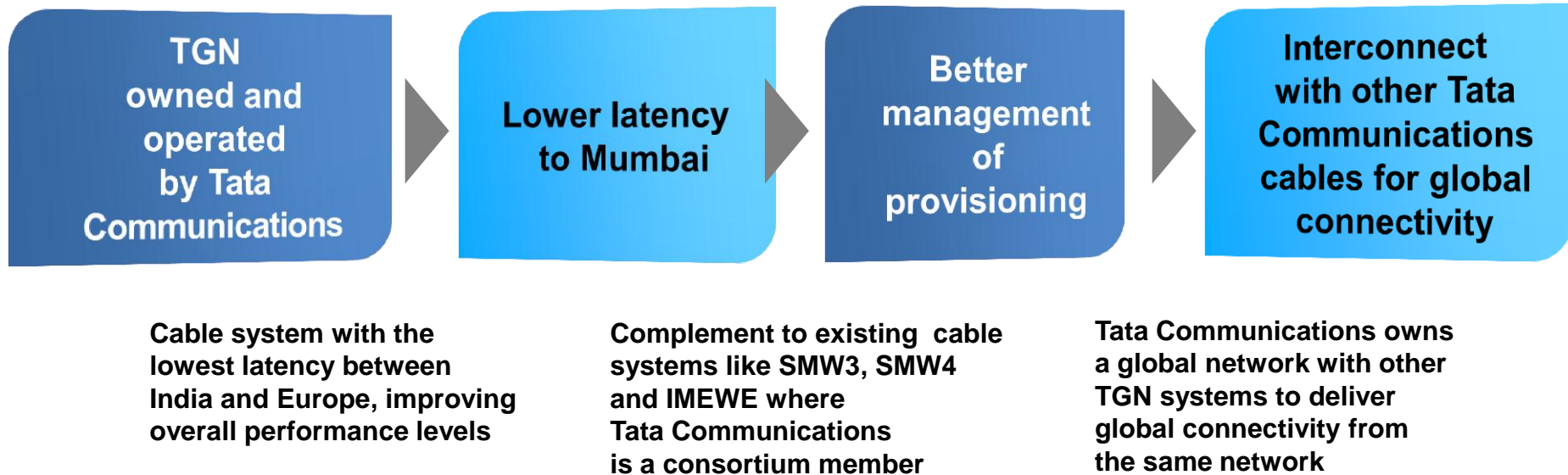
*** KPCB mobile trend 2011 by Mary Meeker

First company to own Round-the-World cable ring

With the **recent completion of TGN-Gulf**, Tata Communications now **owns a “Ring Around the World”**, that includes other TGN systems such as TGN-TIC, TGN-IA, TGN-P, TGN-A and TGN-Europe



Key features and benefits of Tata Global Network (TGN)



Tata Communications network advantages

Round-the-World robust network

One of the largest global Tier-1 IP networks

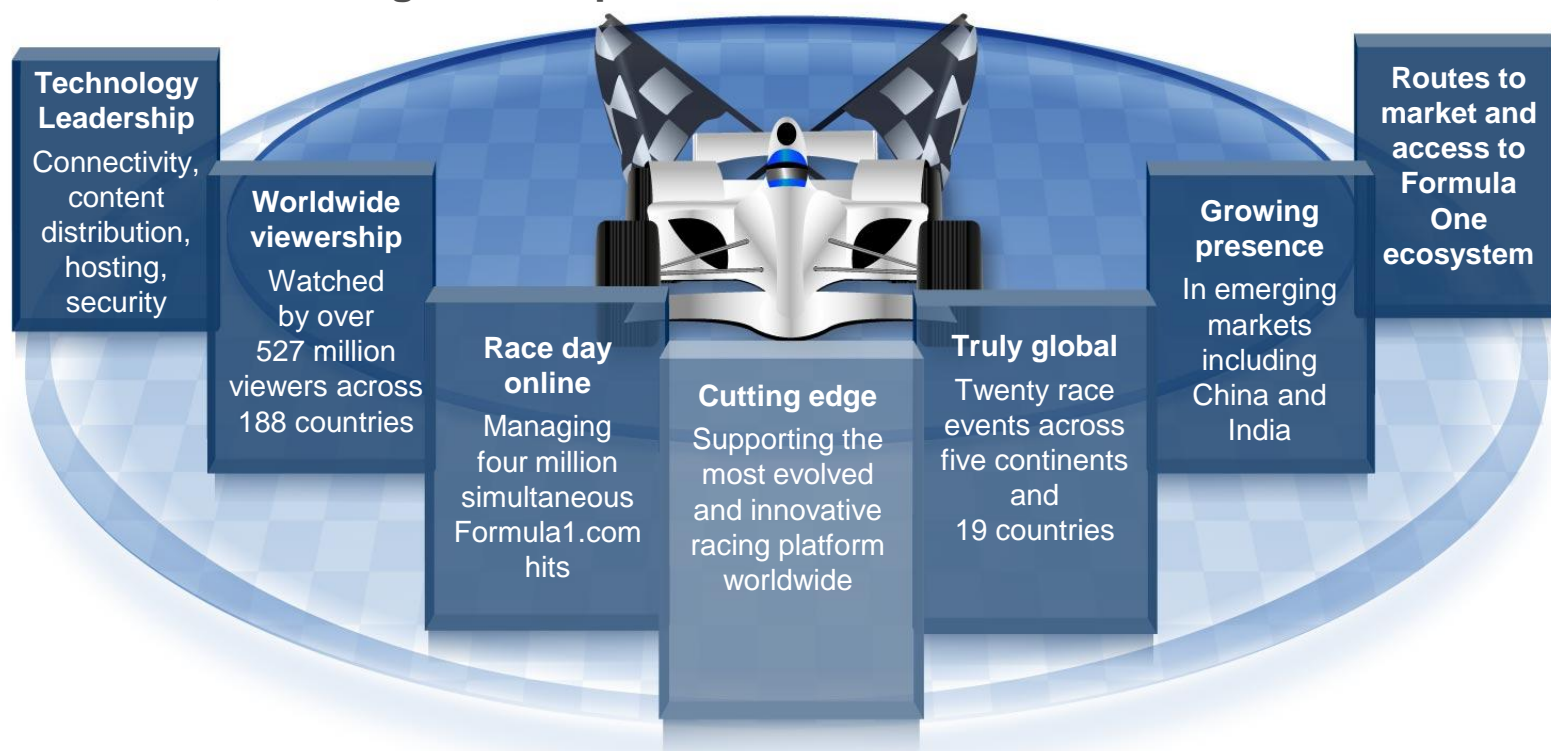
Bandwidth to meet market demands

QoS-enabled IP network

Enterprise network services, e.g., MPLS services, Ethernet services

Case study: Formula 1™

- A customer, a strategic brand platform and a route to market



An abstract graphic on the left side of the slide. It features several overlapping, semi-transparent shapes in shades of blue and yellow. Within these shapes, there is a photograph of a modern building with a curved, glass-enclosed staircase or walkway, set against a blue sky with clouds.

Thank you

Visit us at:

Website: www.tatacommunications.com

Twitter: @Tata_Comm

Blog: www.tatacommunications-newworld.com